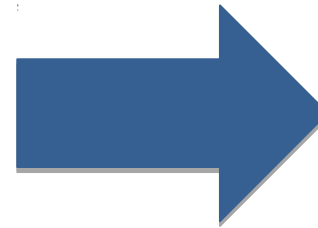
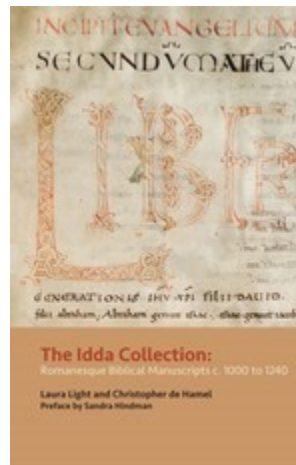
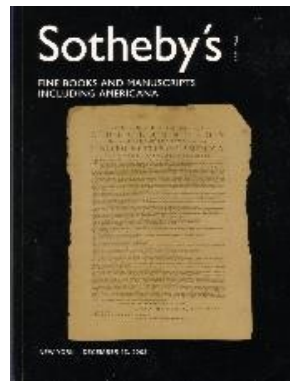
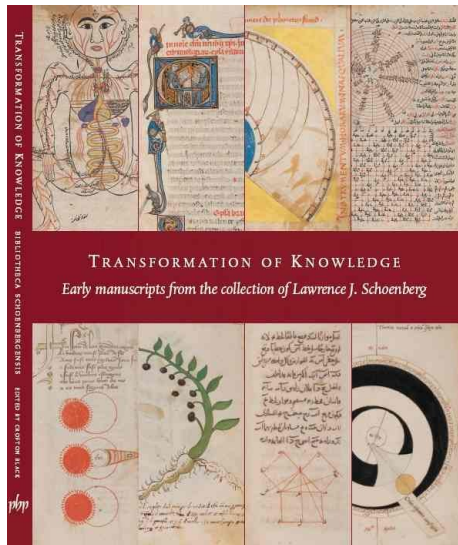


The New SDBM Data Model

The SDBM captures manuscript descriptions as described in various sources, and connects descriptions about the same manuscript together to create a history of that manuscript's transmission across time

The SDBM isn't really a database of manuscripts, it's a database of **observations** about manuscripts, e.g.: catalogs from auctions, booksellers, and private collections; census and inventory data; personal observations from users

The SDBM gathers data from various sources that describe manuscripts



SDBM

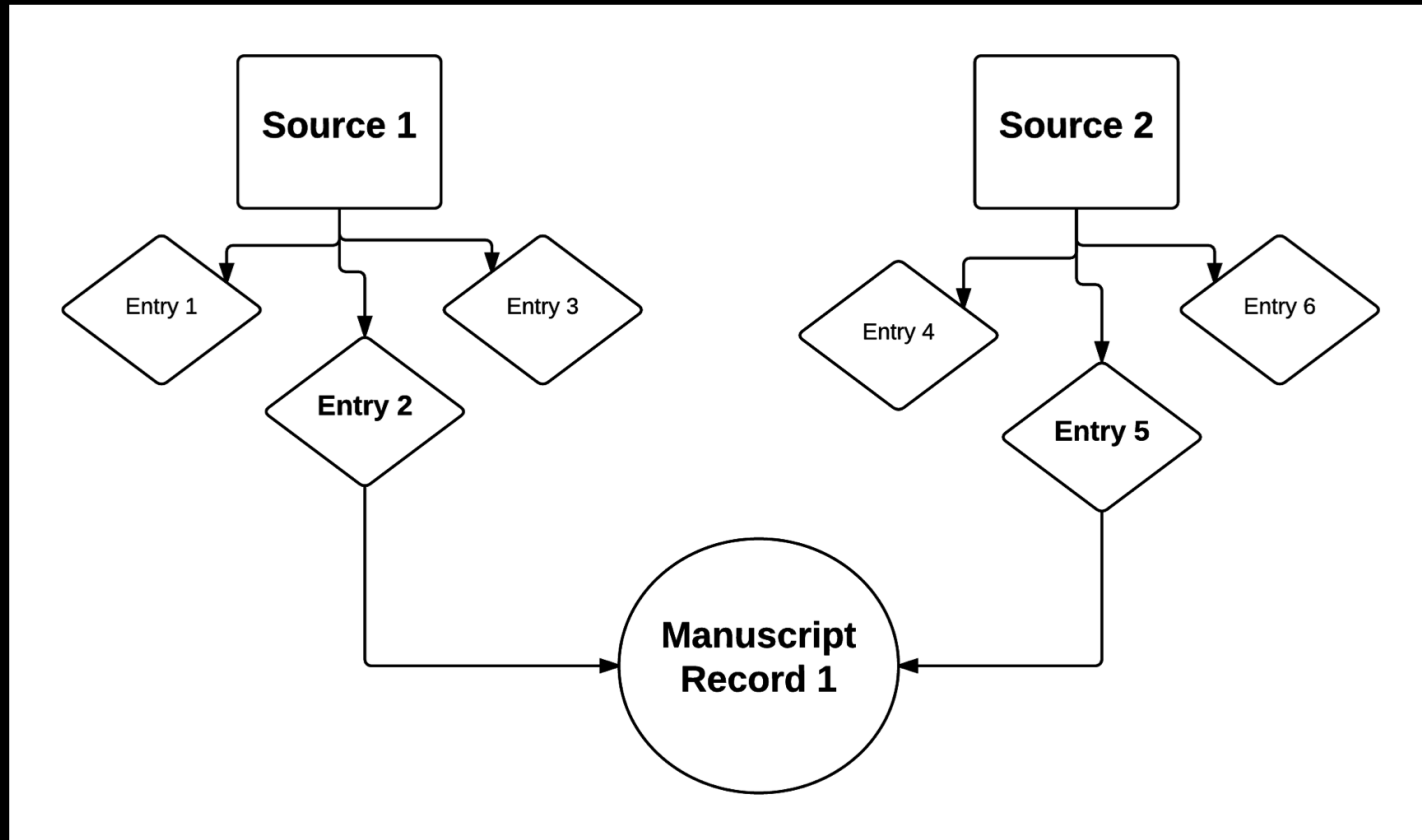
The SDBM **DOES NOT** own any manuscripts.

The SDBM **DOES NOT** make any objective claims about the reality of a manuscript's descriptive characteristics or provenance history. The SDBM reflects what its **Sources** record about the manuscripts.

SDBM Data Model

- The SDBM is composed of three main entities: **Sources**, **Entries**, and **Manuscript Records**.
- **Entries** are observations of manuscripts derived from **Sources**
- **Entries** that describe the same manuscript are linked together via a **Manuscript Record**

Basic SDBM Data Model



Source

- Information resource about manuscripts:
 - Auction/Sale Catalogs
 - Private Collection Catalogs
 - Online-only Auction and Bookseller Websites
 - Other Published Sources
 - Unpublished Sources
 - Personal Observations

Sources, cont.

- Each Source in the SDBM has its own ID number.
- Each Source has an About page that includes its description and links to every entry derived from it in the database.
- Click on any SDBM_SOURCE_ID number while in the database to go to that source's About page.

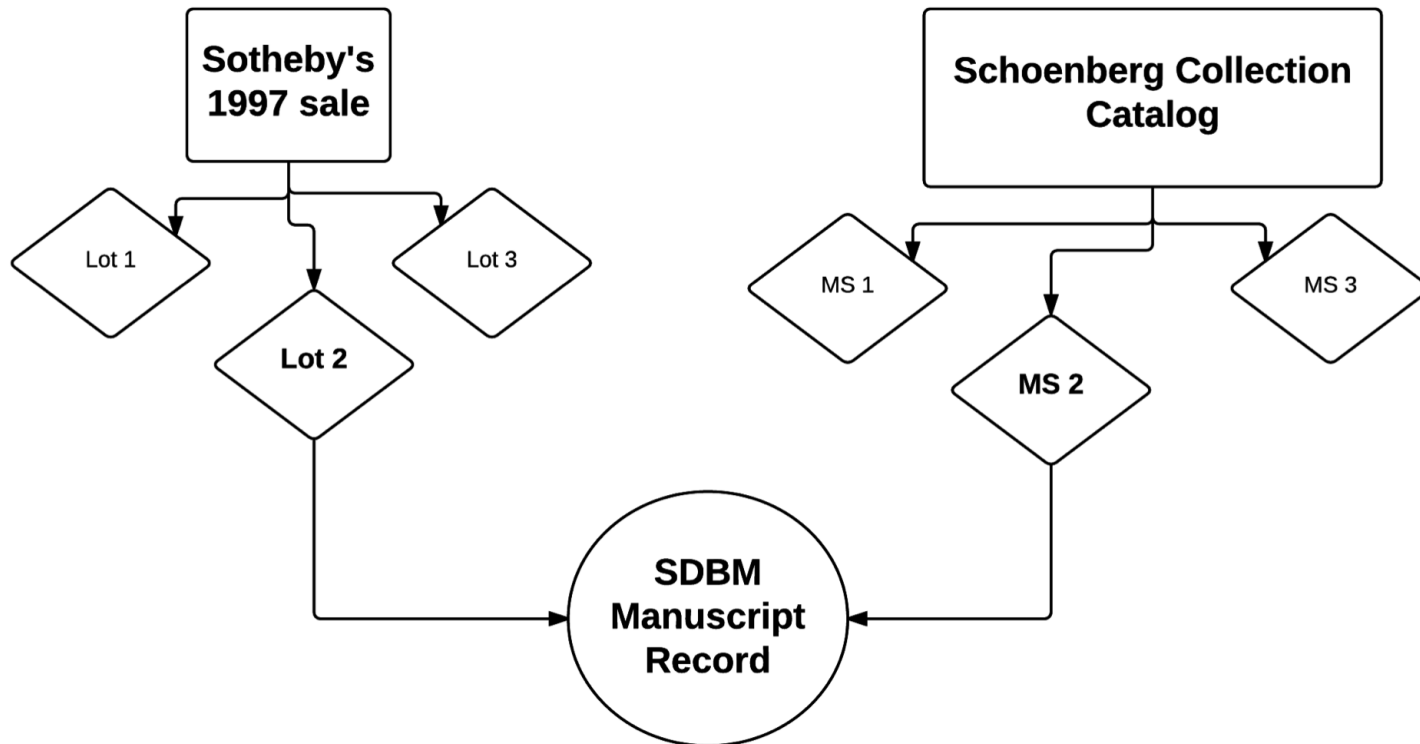
Entry

- An entry is a observation about a single manuscript as described in a **Source**
- An entry repeats verbatim the information recorded in its Source
- Each entry has its own SDBM_ID number
- Entries about the same manuscript can be linked together. These links are what make up a **Manuscript Record**

Manuscript Record

- **Entries** that describe the same manuscript are linked together via the **Manuscript Record**
- The **Manuscript Record** displays a composite provenance list derived from the linked entries, in addition to the manuscript's last known location and common title(s).
- Click on an SDBM_MS_ID number in the database to open that **Manuscript Record**

Example:



Additional Resources

- From the **Help** menu in your Dashboard:
 - User Manual PDF
 - Data Definitions PDF
 - Video Tutorials
 - Questions or comments? Email us at sdbm@upenn.edu